

THE RURAL MUNICIPALITY OF WHITEMOUTH

BY-LAW NO. 629/15

BEING A BY-LAW OF THE RURAL MUNICIPALITY OF WHITEMOUTH TO AUTHORIZE THE ENTERING INTO AND EXECUTION OF AN AGREEMENT WITH RUDY FRIESEN OWNER OF WHITEMOUTH HOMEHARDWARE BUILDING CTR.

WHEREAS Section 250(2) of Part 8, Division 1 of The Municipal Act provides in part as follows:

252(2) Without limiting the generality of subsection (1), a municipality may for municipal purposes do the following:

- (d) enter into an agreement with a person, with an agency of the Government of Manitoba or the Government of Canada, or with another municipality, including a municipality in another province, to do with or on behalf of the municipality anything the municipality has the power to do within the municipality;

AND WHEREAS it is deemed necessary and desirable that The Rural Municipality of Whitemouth enter into an agreement with Rudy Friesen owner of Whitemouth Home Hardware Building Center;

AND WHEREAS the terms of the agreement that the building identified on Schedule "A" encroaching on RM Land remain as situated until it is no longer required by the owner. In the case of the building being destroyed by fire or natural disaster, the owner shall adhere to the rules set out in the Rural Municipality of Whitemouth's Zoning By-Law, to re build.

NOW THEREFORE BE IT AND IT IS HEREBY ENACTED that the Council of The Rural Municipality of Whitemouth, duly assembled, enact as follows:

1. **THAT** the entering into the proposed Agreement is hereby approved and authorized.
2. **THAT** the Reeve and the Chief Administrative Officer of The Rural Municipality of Whitemouth are hereby authorized and instructed to execute the agreement, for and on behalf of the Municipality.

DONE AND PASSED by the Council of The Rural Municipality of Whitemouth in regular session assembled, this 28th day of January, A.D., 2015.

5th February


Reeve

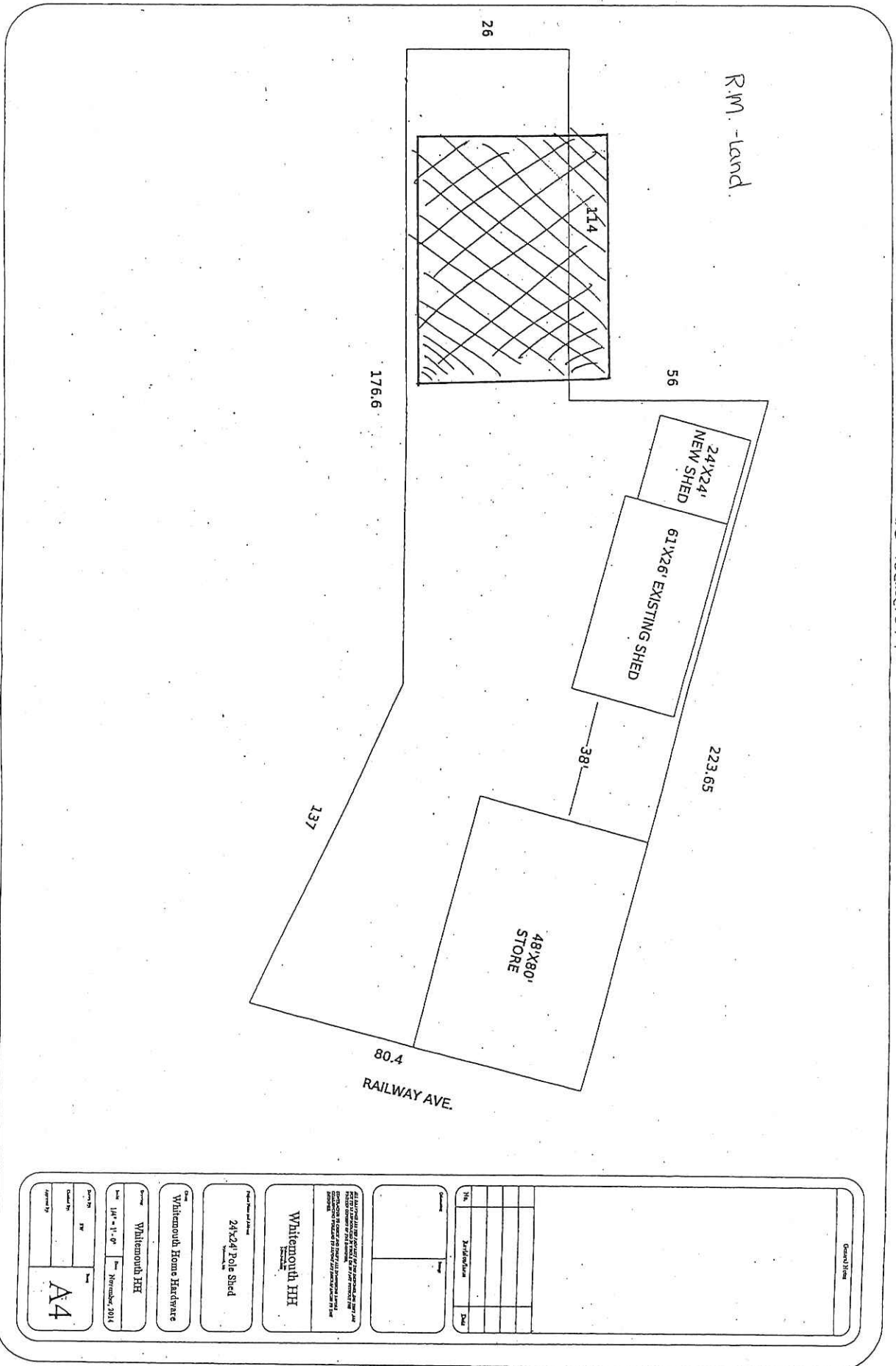
Chief Administrative Officer

Read a first time this 14th day of January, A.D., 2015
Read a second time this 28th day of January, A.D., 2015
Read a third time this 28th day of January, A.D., 2015

February
February

THE RURAL MUNICIPALITY OF WHITEMOUTH

Schedule "A" to By-law 629/15



General Notes	
<p>1. ALL DIMENSIONS ARE TO FACE UNLESS OTHERWISE SPECIFIED.</p> <p>2. ALL DIMENSIONS ARE TO BE TAKEN FROM THE CENTERLINE OF RAILWAY AVE.</p> <p>3. ALL DIMENSIONS ARE TO BE TAKEN FROM THE CENTERLINE OF RAILWAY AVE.</p> <p>4. ALL DIMENSIONS ARE TO BE TAKEN FROM THE CENTERLINE OF RAILWAY AVE.</p>	
Item	Description
1	Whitemouth HH
2	24'x24' Pole Shed
3	Whitemouth Home Hardware
4	Whitemouth HH
5	14' x 11' 0"
6	Whitemouth, 2015
7	RR
8	RR
9	RR
10	RR
11	RR
12	RR
13	RR
14	RR
15	RR
16	RR
17	RR
18	RR
19	RR
20	RR
21	RR
22	RR
23	RR
24	RR
25	RR
26	RR
27	RR
28	RR
29	RR
30	RR
31	RR
32	RR
33	RR
34	RR
35	RR
36	RR
37	RR
38	RR
39	RR
40	RR
41	RR
42	RR
43	RR
44	RR
45	RR
46	RR
47	RR
48	RR
49	RR
50	RR
51	RR
52	RR
53	RR
54	RR
55	RR
56	RR
57	RR
58	RR
59	RR
60	RR
61	RR
62	RR
63	RR
64	RR
65	RR
66	RR
67	RR
68	RR
69	RR
70	RR
71	RR
72	RR
73	RR
74	RR
75	RR
76	RR
77	RR
78	RR
79	RR
80	RR
81	RR
82	RR
83	RR
84	RR
85	RR
86	RR
87	RR
88	RR
89	RR
90	RR
91	RR
92	RR
93	RR
94	RR
95	RR
96	RR
97	RR
98	RR
99	RR
100	RR
101	RR
102	RR
103	RR
104	RR
105	RR
106	RR
107	RR
108	RR
109	RR
110	RR
111	RR
112	RR
113	RR
114	RR
115	RR
116	RR
117	RR
118	RR
119	RR
120	RR
121	RR
122	RR
123	RR
124	RR
125	RR
126	RR
127	RR
128	RR
129	RR
130	RR
131	RR
132	RR
133	RR
134	RR
135	RR
136	RR
137	RR
138	RR
139	RR
140	RR
141	RR
142	RR
143	RR
144	RR
145	RR
146	RR
147	RR
148	RR
149	RR
150	RR
151	RR
152	RR
153	RR
154	RR
155	RR
156	RR
157	RR
158	RR
159	RR
160	RR
161	RR
162	RR
163	RR
164	RR
165	RR
166	RR
167	RR
168	RR
169	RR
170	RR
171	RR
172	RR
173	RR
174	RR
175	RR
176	RR
177	RR
178	RR
179	RR
180	RR
181	RR
182	RR
183	RR
184	RR
185	RR
186	RR
187	RR
188	RR
189	RR
190	RR
191	RR
192	RR
193	RR
194	RR
195	RR
196	RR
197	RR
198	RR
199	RR
200	RR
201	RR
202	RR
203	RR
204	RR
205	RR
206	RR
207	RR
208	RR
209	RR
210	RR
211	RR
212	RR
213	RR
214	RR
215	RR
216	RR
217	RR
218	RR
219	RR
220	RR
221	RR
222	RR
223	RR
224	RR
225	RR
226	RR
227	RR
228	RR
229	RR
230	RR
231	RR
232	RR
233	RR
234	RR
235	RR
236	RR
237	RR
238	RR
239	RR
240	RR
241	RR
242	RR
243	RR
244	RR
245	RR
246	RR
247	RR
248	RR
249	RR
250	RR
251	RR
252	RR
253	RR
254	RR
255	RR
256	RR
257	RR
258	RR
259	RR
260	RR
261	RR
262	RR
263	RR
264	RR
265	RR
266	RR
267	RR
268	RR
269	RR
270	RR
271	RR
272	RR
273	RR
274	RR
275	RR
276	RR
277	RR
278	RR
279	RR
280	RR
281	RR
282	RR
283	RR
284	RR
285	RR
286	RR
287	RR
288	RR
289	RR
290	RR
291	RR
292	RR
293	RR
294	RR
295	RR
296	RR
297	RR
298	RR
299	RR
300	RR
301	RR
302	RR
303	RR
304	RR
305	RR
306	RR
307	RR
308	RR
309	RR
310	RR
311	RR
312	RR
313	RR
314	RR
315	RR
316	RR
317	RR
318	RR
319	RR
320	RR
321	RR
322	RR
323	RR
324	RR
325	RR
326	RR
327	RR
328	RR
329	RR
330	RR
331	RR
332	RR
333	RR
334	RR
335	RR
336	RR
337	RR
338	RR
339	RR
340	RR
341	RR
342	RR
343	RR
344	RR
345	RR
346	RR
347	RR
348	RR
349	RR
350	RR
351	RR
352	RR
353	RR
354	RR
355	RR
356	RR
357	RR
358	RR
359	RR
360	RR
361	RR
362	RR
363	RR
364	RR
365	RR
366	RR
367	RR
368	RR
369	RR
370	RR
371	RR
372	RR
373	RR
374	RR
375	RR
376	RR
377	RR
378	RR
379	RR
380	RR
381	RR
382	RR
383	RR
384	RR
385	RR
386	RR
387	RR
388	RR
389	RR
390	RR
391	RR
392	RR
393	RR
394	RR
395	RR
396	RR
397	RR
398	RR
399	RR
400	RR
401	RR
402	RR
403	RR
404	RR
405	RR
406	RR
407	RR
408	RR
409	RR
410	RR
411	RR
412	RR
413	RR
414	RR
415	RR
416	RR
417	RR
418	RR
419	RR
420	RR
421	RR
422	RR
423	RR
424	RR
425	RR
426	RR
427	RR
428	RR
429	RR
430	RR
431	RR
432	RR
433	RR
434	RR
435	RR
436	RR
437	RR
438	RR
439	RR
440	RR
441	RR
442	RR
443	RR
444	RR
445	RR
446	RR
447	RR
448	RR
449	RR
450	RR
451	RR
452	RR
453	RR
454	RR
455	RR
456	RR
457	RR
458	RR
459	RR
460	RR
461	RR
462	RR
463	RR
464	RR
465	RR
466	RR
467	RR
468	RR
469	RR
470	RR
471	RR
472	RR
473	RR
474	RR
475	RR
476	RR
477	RR
478	RR
479	RR
480	RR
481	RR
482	RR
483	RR
484	RR
485	RR
486	RR
487	RR
488	RR
489	RR
490	RR
491	RR
492	RR
493	RR
494	RR
495	RR
496	RR
497	RR
498	RR
499	RR
500	RR
501	RR
502	RR
503	RR
504	RR
505	RR
506	RR
507	RR
508	RR
509	RR
510	RR
511	RR
512	RR
513	RR
514	RR
515	